

**BKT AL201 - Electronically controlled and monitored swinghandle with key override, built-in optional rfid card reader**
**Product description**

Electrically controlled and monitored swinghandle for IT cabinets.

- It allows the remote opening from any external access control systems.
- Can work in stand-alone mode when any card reader with Wiegand interface is connected.
- Equipped with the sensor of the handle position.
- Three connectors for control and status signals of the handle and optional card reader.
- Three-color LED signalling the operation status of the swinghandle.
- Emergency key override.
- Available inserts for the master key system.
- For use with indoor cabinets.
- Installation in a standard 150x25mm cut out.
- Can be installed in a single and multi-point locking system (requires additional elements - cam or cogwheel mechanism, which should be ordered separately).

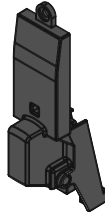

**Technical data**

Power Supply	Nominal 12V DC Acceptable 10-24V DC
Current consumption	Quiescent: 25mA Maximal when opening/closing: 180mA
Connectors	8-pin connector type 53047-0810 4-pin connector type 53047-0410 3-pin connector type 53047-0310
Operating conditions	Temperature: 0°C - 50°C Humidity: 0% - 90% RH (without condensation)
Enclosure	Glass fibre reinforced polyamide PA6 GF30
Dimensions	212 x 47 x 40 mm (H x W x D)
Colour	Black, RAL 9005
Weight	160g
Enclosure protection	IP30 according to EN 60529:1991/A2:2013/AC:2019- 02
Compliance with directives	2014/30/EU (EMC) 2011/65/EU (RoHS)
Part number	122AL002010

**BKT AL201 - Electronically controlled and monitored swinghandle with key override, built-in optional rfid card reader**
**Upgrading mechanical handle to electronic handle**


ML201 – Mechanical handle.  
Only available with BKT cabinet.  
(122ML002010)

+



AE201 – Electronic module  
(122AE002013)

=



AL201 - Electronic handle  
(122AL002010)

**Upgrading the electronic handle with an RFID reader**

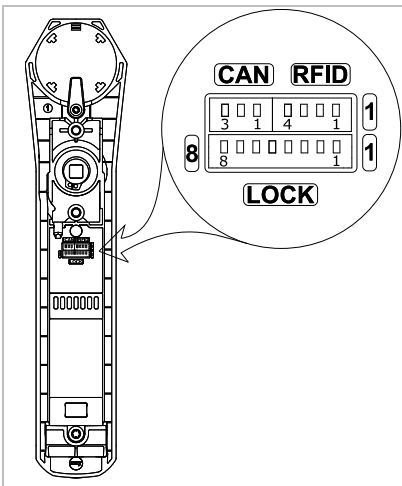

AL201 - Electronic handle  
(122AL002010)

+

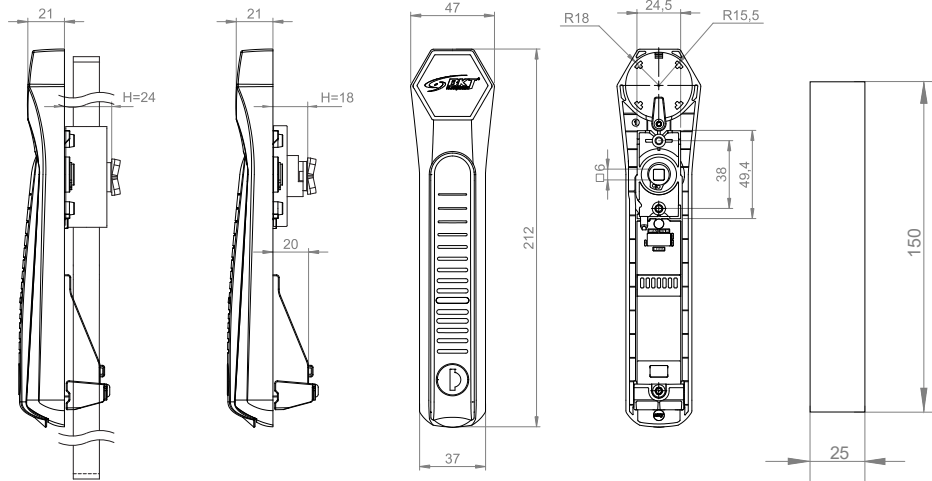


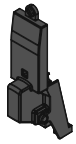





AR222 – Rfid reader  
(122AR002220)

=


**Connectors**


LOCK		8-pin socket (53047-0810)	8-pin socket (53047-0810)
1	White	GND	Power supply input: GND.
2	Brown	+12V	Power supply input: +12V.
3	Green	STATUS	Open collector output for signalling the position of the handle, I <sub>C</sub> =50mA, U <sub>CE</sub> =25V. Handle open -> transistor on, handle closed -> transistor off.
4	Yellow	CTRL	Input for controlling the swinghandle from an external system. Opening the handle -> CTRL shorted to GND or +12V. Closing the handle -> CTRL not connected.
5	Grey	SENSOR	Door sensor input - for the future use. Do not connect.
6	Pink	GND	GND - for the door sensor - for the future use. Do not connect.
7	Blue	CANL	CAN bus interface (CANL) - for the future use. Do not connect.
8	Red	CANH	CAN bus interface (CANH) - for the future use. Do not connect.
RFID		4-pin socket (53047-0410) for rfid card reader	
1	White	GND	Card reader power supply output (directly connected to GND of 8-pin socket).
2	Brown	+12V	Card reader power supply output (directly connected to +12V of 8-pin socket).
3	Green	WIEGAND 0	Wiegand Data0 card reader input.
4	Yellow	WIEGAND 1	Wiegand Data1 card reader input.
CAN		3-pin socket (53047-0310) for CAN interface	
1	White	GND	GND - for the CAN interface - for the future use. Do not connect.
2	Brown	CANL	CAN bus interface (CANL) - for the future use. Do not connect.
3	Green	CANH	CAN bus interface (CANH) - for the future use. Do not connect.

**BKT AL201 - Electronically controlled and monitored swinghandle with key override, built-in optional rfid card reader**
**Dimensions**

**Accessories**

Product		Part number
	AE201 - Electronic module for the ML201 swinghandle. ML201 with AE201 module creates AL201 electronic swinghandle	122AE002013
	AR222 - RFID 125kHz reader for AL201 swinghandle, reads Unique, HID Prox cards	122AR002220
	AW285 - AL200 and AL201 swinghandle 8-wire connection cable, length 5m; connectors: 1-plug, 2-ferrules	122AW002850
	AW280 - AL200 and AL201 swinghandle 8-wire connection cable, length 0.5m; connectors: 1-plug, 2-ferrules	122AW002800
	AW245 - AL200 and AL201 swinghandle 4-wire connection cable, length 5m; connectors: 1-plug, 2-ferrules	122AW002450
	AW240 - AL200 and AL201 swinghandle 4-wire connection cable, length 0.5m; connectors: 1-plug, 2-ferrules	122AW002400