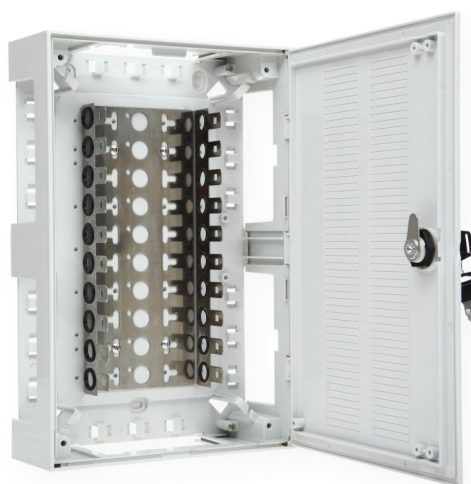


Product Information

BKT Internal 100-Pair Connection Box with a Lock

Card No.: PI_11320678.4_01.18

Internal casing for mounting LSA connection modules. It includes cable carriers and grommets that allow routing cables from the sides of the box. It has a built-in back mount frame that allows mounting up to 10, 10-pair LSA connection modules. The box can be locked.



Features

- Size (width x height x depth): 215 x 320 x 100 mm
- Weight: about 1,5 kg
- Protection Rating: IP 30
- Possible to equip with a frame that allows flush-mounting
- Possible to equip with a frame extending the box depth

Standards

- EN 50173-1
- ISO/IEC 11801
- ANSI/TIA-568-C.2
- RoHS 2011/65/EU



Optional accessories

Index	Product description
11320678.2	BKT depth extending frame for internal 100-pair connection box
11320678.3	BKT masking frame for internal 100-pair connection box

Performance / Variants

Index	Product description
11320678.4	BKT internal 100-pair connection box with a lock