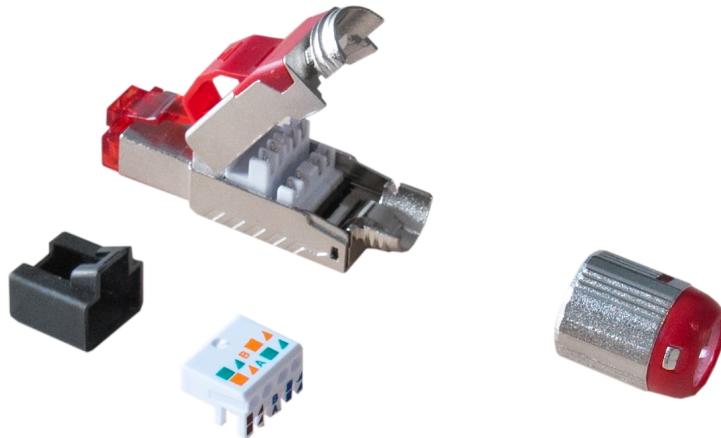


Product Information

BKT RJ45 cat.6_A plug, AWG 22-26 shielded, toolless

Card No.: PI_11333113_01.21



Application

The BKT RJ45 cat. 6A toolless plug is a universal cutting-edge solution that allows the fast and simple termination of AWG 22-26 twisted pair cables without the need for special tools. The BKT RJ45 cat. 6A toolless plug is designed for MPTL (Modular Plug Terminated Link) and E2E (End to End) configurations according to ISO/IEC TR 11801-9902:2017 standard.

Devices in MPTL and E2E configurations are mostly connected directly to the network without using patch cords e.g.:

- WiFi access points
- IP cameras
- Sensors
- Automation devices
- IoT devices at home (Internet of Things)

Features

- Universal IDC slot connection for solid and flex cables
- Universal IDC slot connection for wires with 22-26 AWG
- T568A/B scheme indicated on the toolless organiser
- Fast and easy installation guarantees repeatability of the installation by the installer
- Toolless assembly method, no special assembly tools needed
- High durability
- 360° shielding
- IP 20
- Conforms with requirements of PoE (PoE, PoE+, 4PPoE)
- Dimensions (H x W x D) – 14.45mm x 56mm x 13.8mm

Standards

- EN 50173-1
- EN 60603-7-51
- ISO/IEC 11801
- IEC 60603-7-51
- IEC 60512-99-002
- ANSI/TIA-568.2
- IEEE 802.3af/at/bt
- RoHS 2011/65/EU



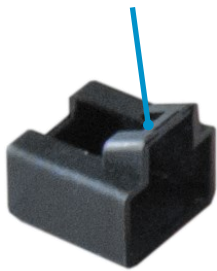
Product Information

BKT RJ45 cat.6_A plug, AWG 22-26 shielded, toolless

Card No.: PI_11333113_01.21

Special features

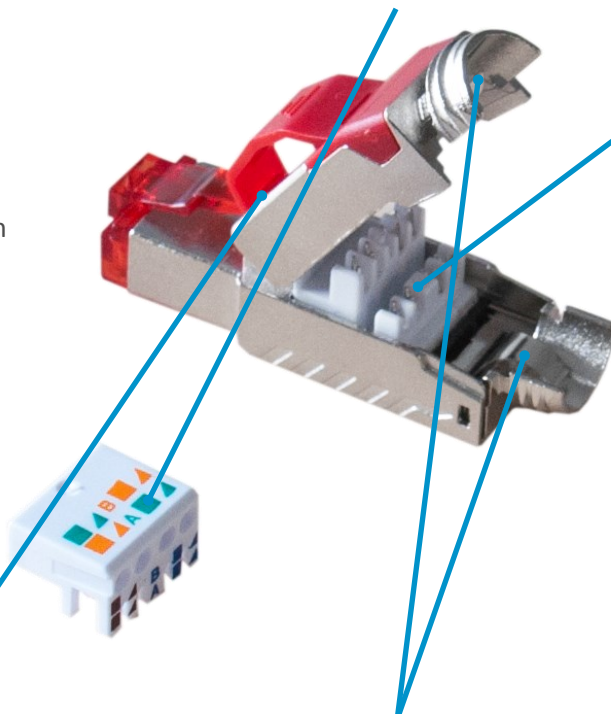
Each plug is protected by a dust cover



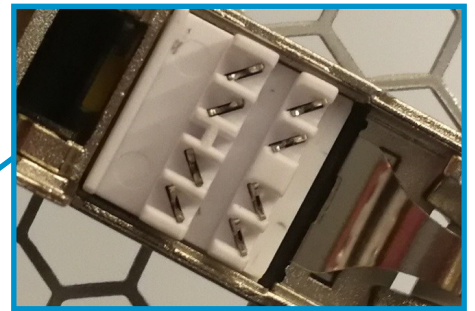
The length of the plug with boot is only 56mm (w/o boot 43mm)



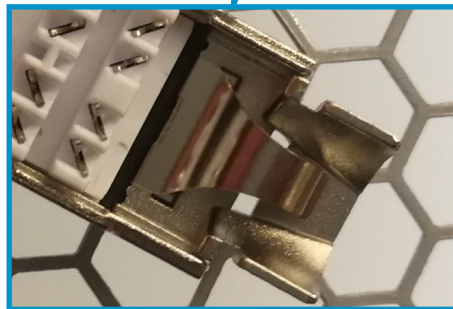
Color-coded scheme on the organiser that facilitates termination according to T568A and T568B schemes



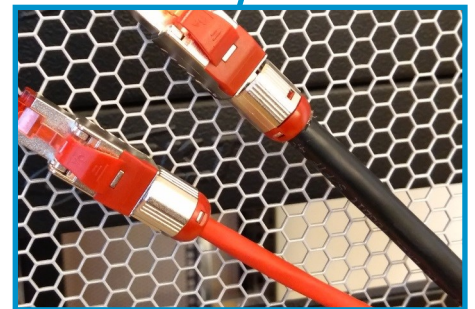
Universal IDC slot connection for wires with 22-26 AWG



The construction element that facilitates the disconnection of the plug and protects the "tongue" of the plug from breaking



The construction element that guarantees precise shield continuity



Cable boot for the cables up to 9mm OD

Product Information

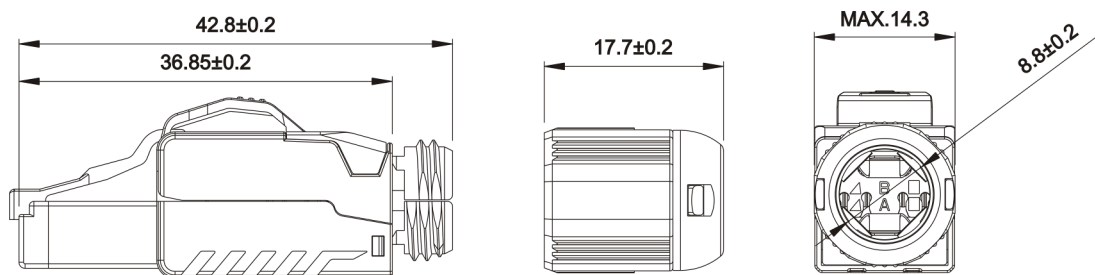
BKT RJ45 cat.6_A plug, AWG 22-26 shielded, toolless

Card No.: PI_11333113_01.21

Physical and mechanical properties

Specification	T568A & T568B wiring map printed on cable organiser Insertion force: 30N max Retention strength: 7.7 kg between jack and plug Operation temperature: -20°C to 60°C
Durability	RJ45: 750 cycles/min IDC: min 20 terminations for AWG 22-26 solid/flex wires
Plug casing	Nickel plated die-casting Zinc
Connector plug	Housing: PC, UL 94-V2, red
Connector pins	Material: Nickel plated phosphor bronze Finish: 50 micro inch gold plated on plug contact area
IDC slot	Housing: PC, UL 94-V2, white Terminal: tin plated titanium copper
PCB	UL 94V-0
Cable organiser	PC, UL 94-V2, white
Shield	Nickel plated die-casting Zinc
Dust cover	PE, black
Boot	Nickel plated die-casting Zinc
IP protection	IP 20

Dimensions [mm]



Performance / Variants

Index	Product description
11333113	BKT RJ45 cat.6A plug, AWG 22-26, shielded, toolless