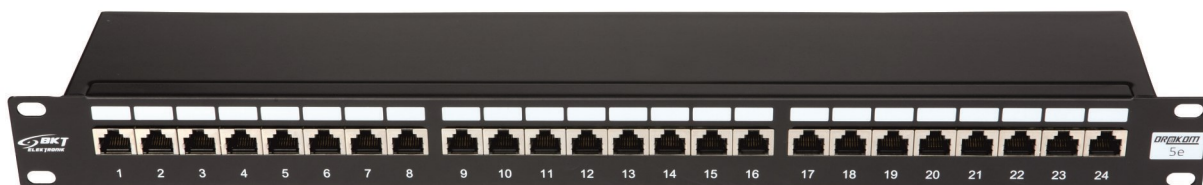


## Product Information

Patch panel BKT 19" 1U, cat.5e, shielded, 24xRJ45, black

Card No.: PI\_11301111.2\_01.21



## Application

BKT IDC Patch panel serve as terminals for wire cables laid vertically or horizontally and function as a connecting point for active equipment working within a network. All elements feature high quality transmission and mechanical parameters.

## Features

- Patch panel designed in 19" standard with a height of 1U
- Integrated cabling shelf for securing cables using cable ties
- 24 shielded RJ45 ports
- Slot connection IDC LSA for cables with 22-26 AWG
- Color-coded terminals according to T568A and T568B schemes
- Fixing the wires in the IDC slot can be done by LSA tool
- Grounding wire
- Black colour RAL 9005
- Size (H x W x D) – 43,6mm x 482,6mm x 92,3mm

## Standards

- |                   |                   |
|-------------------|-------------------|
| • EN 50173-1      | • ANSI/TIA-568.2  |
| • EN 60297-3-100  | • EIA-310-E       |
| • ISO/IEC 11801   | • RoHS 2011/65/EU |
| • IEC 60297-3-100 |                   |



## Product Information

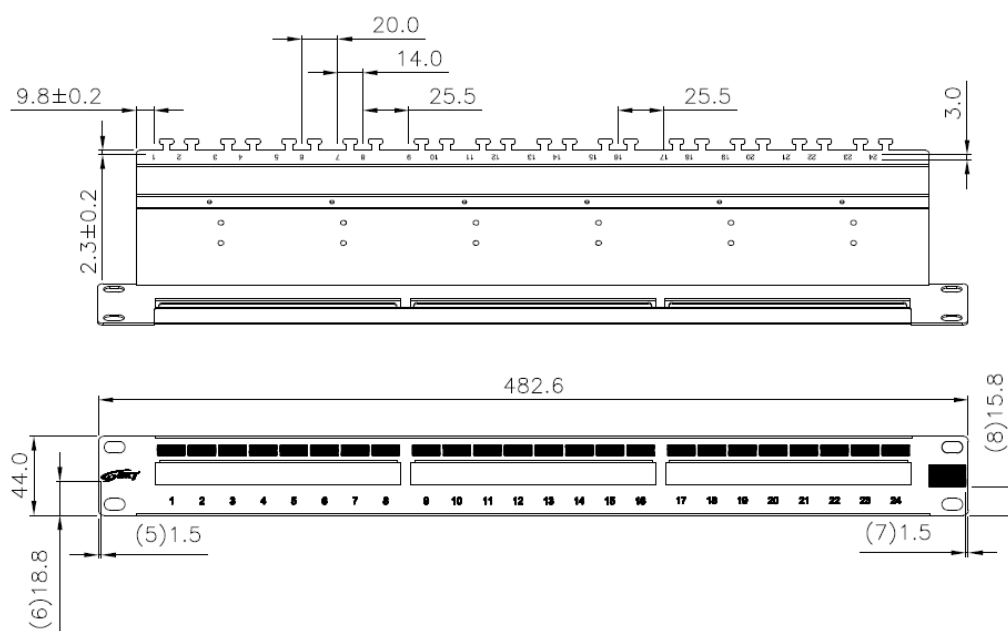
Patch panel BKT 19" 1U, cat.5e, shielded, 24xRJ45, black

Card No.: PI\_11301111.2\_01.21

## Physical and mechanical properties

Specification	<ul style="list-style-type: none"> <li>- T568A &amp; T568B wiring map printing in IDC slot</li> <li>- housing: galvanized steel tin plated (SECC) 1,5 mm thick, powder painted in black</li> </ul>
Durability	<ul style="list-style-type: none"> <li>- RJ45 socket: 750 cycles plug mating and unmating test, insertion cycles at 20 cycles/minute max. contact resistance test per 100 cycles</li> </ul>
RJ45 socket	<ul style="list-style-type: none"> <li>- housing: poli tereftalato butylene (PBT) UL 94V-0</li> <li>- shield: bronze nickel plated</li> </ul>
RJ45 socket contact	<ul style="list-style-type: none"> <li>- material: phosphor bronze 1,2÷1,5 µm nickel plated</li> <li>- finish: 1,2 µm gold plated on 1,2 µm - 1,5 µm nickel layer</li> </ul>
IDC	<ul style="list-style-type: none"> <li>- housing: PC+5%GF, UL 94V-2</li> <li>- IDC pins: phosphor bronze 1,2 µm tin plated</li> <li>- adapted for LSA tool</li> </ul>
RJ45 plug insertion force	<9N
RJ45 plug retention strenght	>75N

## Dimensions [mm]



## Performance / Variants

Index	Product description
11301111.2	Patch panel BKT 19" 1U, cat.5e, shielded, 24xRJ45, black