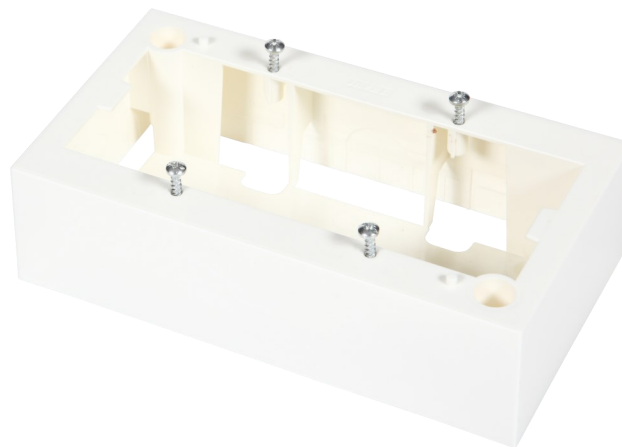


Product Information

BKT 4 MOD Surface-mounted Box

Card No.: PI_11330658.J_01.18

System of socket frames with support, surface-mounted boxes, flush boxes, sockets, dummy plugs and electrical sockets is applied in dedicated power installations in 45 x 45 mm standard. This solution allows putting together complete logical access points starting from dedicated power supply through LAN and optical fiber connection.



Features

- The boxes allow mounting telecom jacks and electrical sockets
- Mounting up to four telecom jacks or two electrical socket
- To be mounted together with BKT 4 MOD Socket Frames with Support
- Supplied with screws for fixing the frame and support
- Additional holes for inserting a cable
- Size (width x heightx depth): 148 x 81 x 40 mm
- Color: white

Standards

- EN 50085-1
- RoHS 2011/65/EU



Performance / Variants

Index	Product description
11330658.J	Surface mount box BKT 4 modules (148 x 81 x 40)