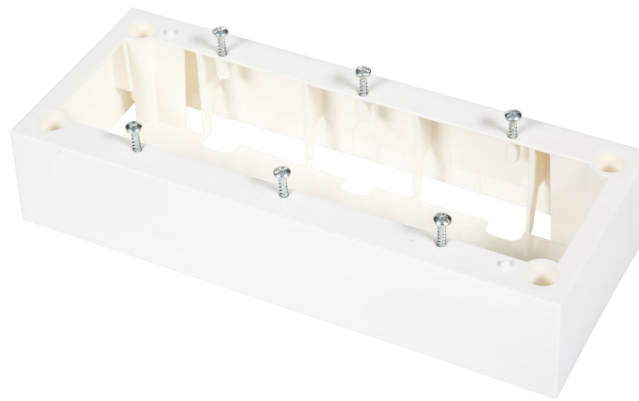


Product Information

BKT 6 MOD Surface-mounted Box

Card No.: PI_11330668.J_01.18

System of socket frames with support, surface-mounted boxes, flush boxes, sockets, dummy plugs and electrical sockets is applied in dedicated power installations in 45 x 45 mm standard. This solution allows putting together complete logical access points starting from dedicated power supply through LAN and optical fiber connection.



Features

- The boxes allow mounting telecom jacks and electrical sockets
- Mounting up to four telecom jacks or two electrical socket
- To be mounted together with BKT 6 MOD Socket Frames with Support
- Supplied with screws for fixing the frame and support
- Additional holes for inserting a cable
- Size (width x height x depth): 205 x 81 x 41 mm
- Color: white

Standards

- EN 50085-1
- RoHS 2011/65/EU



Performance / Variants

| Index | Product description |
|------------|---|
| 11330668.J | Surface mount box BKT 6 modules (205 x 81 x 40) |