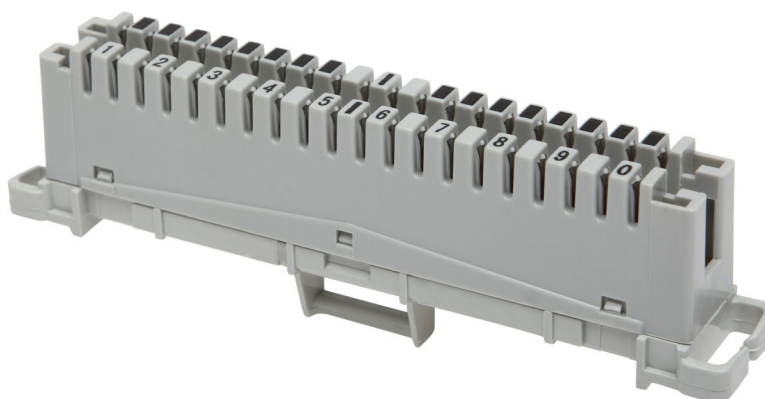


Product Information

BKT 10-Pair LSA Connection Module

Card No.: PI_11330899_01.18

A connection module for terminating multi-pair copper cables. It can terminate up to ten pairs. Connectors of the transmission path made in compliance with the LSA standard. The structure of the electrically conductive element without possibility of disconnecting. Assembly elements allow mounting the connection module to the back mount frame or profile rods.



Features

- IDC LSA Connector
- Diameter of a Single Cable Core: $0.4 \pm 0.7\text{mm}$
- Diameter of a Single Cable Core with Insulation: $0.7 \pm 1.4\text{mm}$
- Insulation Resistance: minimum $105\text{ m}\Omega$
- Contact Resistance: maximum $7\text{m}\Omega$
- Connector Resistance: maximum $3\text{m}\Omega$
- Insulation Resistance: minimum 2kV
- Electrically Conductive Material: silver-coated phosphor bronze
- Non-conductive Material: PBT
- Color: grey

Standards

- EN 50173-1
- ISO/IEC 11801
- ANSI/TIA-568-C.2
- RoHS 2011/65/EU



Performance / Variants

Index	Product description
11330899	BKT 10-pair LSA connection module